

DOF All New Milling

# CRAFT



**CRAFT 2**




**CRAFT PLUS**

# All New Milling Machine Line-up

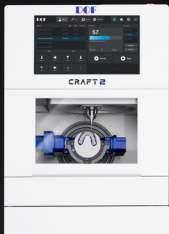
## CRAFT DRY




### Essential Precision in Dry Milling

DRY   WET		
Motor		Step Servo
A/B axis		A:360°, B:±35°
Spindle	Type	SycoTec
	Power	0.8kW
	Speed	60,000RPM
No. of Tool pocket		●●● 21ea
Jig replacement method		Snap-in
MOTION_APP		2.0

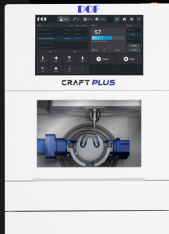
## CRAFT 2




### The Evolution of All-in-One Milling

		
Motor		Servo
A/B axis		A:360°, B:±35°
	Type	Jäger
	Power	0.7kW
	Speed	100,000RPM
No. of Tool pocket		●●● 21ea
Jig replacement method		Screw
MOTION_APP		3.0

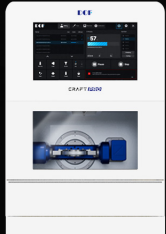
## CRAFT PLUS




### From All-in-One to Metal

		
Motor		Servo
A/B axis		A:360°, B:±35°
	Type	SycoTec
	Power	1.37kW
	Speed	60,000RPM
No. of Tool pocket		●●● 21ea
Jig replacement method		Screw
MOTION_APP		3.0

## CRAFT PRO



### A New Paradigm in All-on-X Metal Milling

		
Motor		Full Servo + Linear Scale
A/B axis		A:360°, B:±35°
	Type	SycoTec
	Power	3.6kW
	Speed	60,000RPM
No. of Tool pocket		●●●● 40ea
Jig replacement method		Screw
MOTION_APP		3.0

Zir, H/C	✓
PMMA, Wax	✓
G/C, Pre-milled	
Titanium Disk	
Co-Cr Disk	

Zir, H/C	✓
PMMA, Wax	✓
G/C, Pre-milled	✓
Titanium Disk	
Co-Cr Disk	

Zir, H/C	✓
PMMA, Wax	✓
G/C, Pre-milled	✓
Titanium Disk	✓
Co-Cr Disk	

Zir, H/C	✓
PMMA, Wax	✓
G/C, Pre-milled	✓
Titanium Disk	✓
Co-Cr Disk	✓



**The Evolution of a Steady Seller,  
the Beginning of an Upgrade**

Building upon the standard set by DOF's steady seller, the CRAFT 5X, the upgraded CRAFT 2 adds new value.

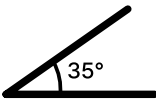
**Equipped with a Servo motor**

Enhanced processing speed  
and ultra-precise milling



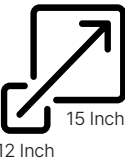
**35° Milling on the B-axis  
Without Angle Limitations**

The optimal solution  
for precision full-arch prosthetics



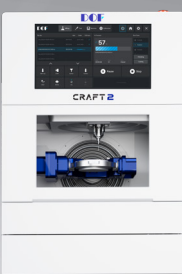
**15-inch Large Screen**

A wide, easy-to-view display  
with convenient operation



The Evolution of All-in-One Milling

**CRAFT 2**



**Core Upgrades**

Motor

Display

**MOTION APP**

B-axis machining angle

Dimensions(WxDxH)

**CRAFT 5X**

**Step**

12인치, 1280×720

**2.0**

~25°

440 × 660 × 710mm

**CRAFT 2**

**Servo**

15인치, 1920×1080

**3.0**

~35°

543 × 670 × 710mm

**UPGRADED!**

**NEW**

**Common Features**

Axis configuration

Machining method

Spindle power

No. of Tool Pocket

Tool shank

Materials

5 Axis

DRY & WET

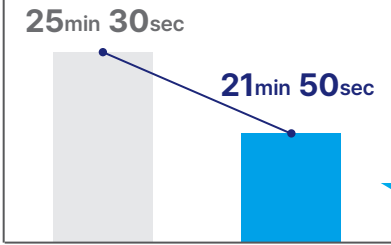
Jäger | 0.7kW, 100,000RPM

21ea

Ø4mm

Zirconia, Wax, PMMA, PEEK, Composite Resin,  
Hybrid Ceramic, Glass Ceramic, Pre-milled Titanium Abutment

**Milling Speed**



**CRAFT 5X CRAFT 2**

**About  
17%  
Reduct**

**Milling Quality**



**CRAFT 5X**



**CRAFT 2**





## CRAFT PLUS, Redefining the Standard of All-in-One Milling.

An all-in-one system integrating every piece of equipment required for milling, now empowered with a high-performance spindle. From titanium disks to zirconia, it completes smooth and precise milling without material limitations.

Technology that goes beyond boundaries. A design that combines spatial efficiency and workflow optimization.

At the moment your familiar workflow feels brand new, CRAFT PLUS is there.



From All-in-One to Metal

# CRAFT PLUS

All-in-One



### All-in-One Milling Machine

From dust collector to water pump and compressor — everything in one machine.



### Titanium Disk Milling

Stable titanium milling enabled by an AC servo motor



### Powerful 1.37kW Spindle

Shorter processing times with reliable precision

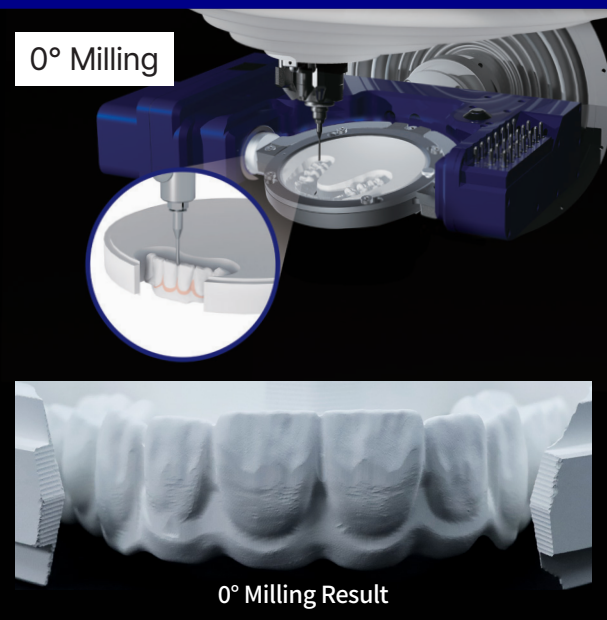






### The CRAFT Series Overcomes Angular Limitations.

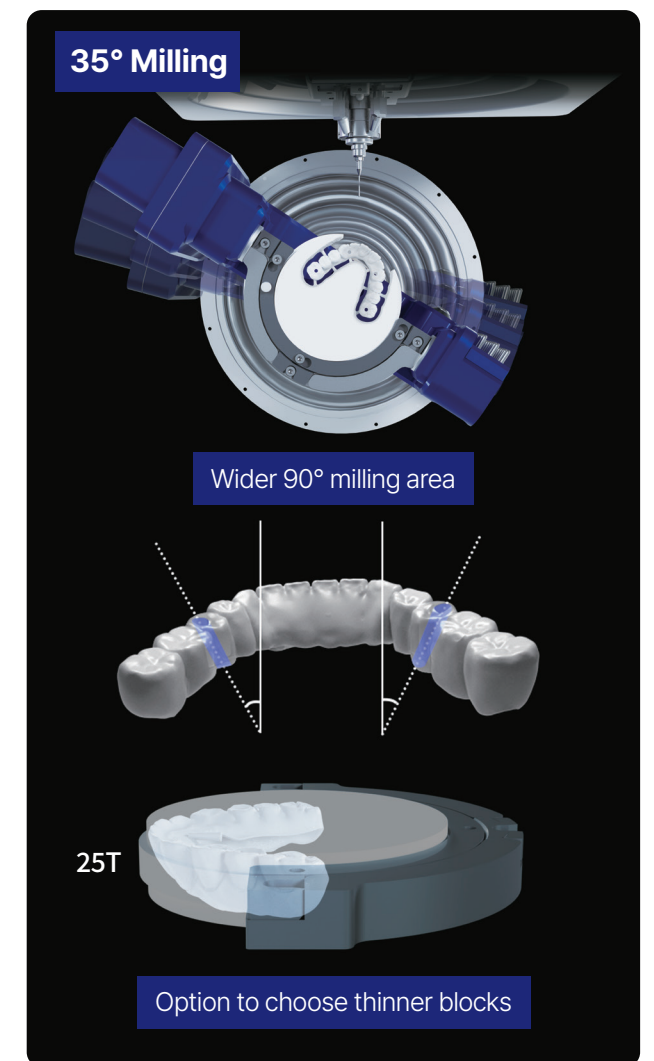
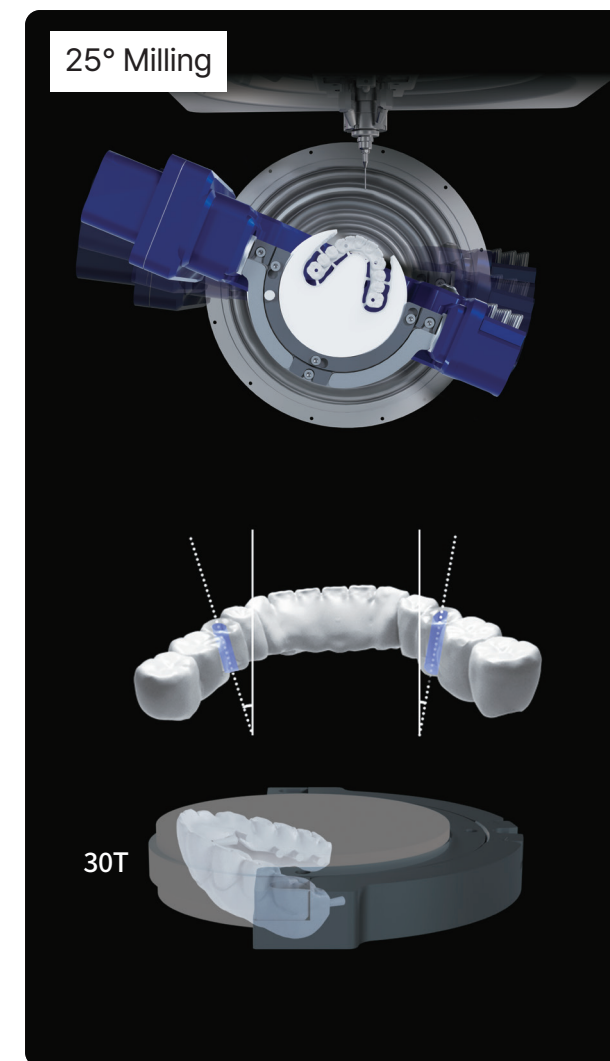
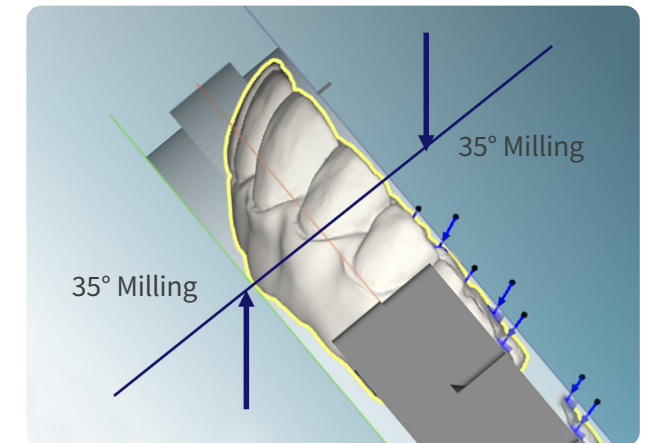
With a C-type clamp, CRAFT 2 and CRAFT PLUS perform 90° milling by positioning the block vertically, allowing precise milling of the outer surfaces of teeth. Thanks to the open structure of the C-type clamp, when the block is placed at 90°, tools can access undercut areas unreachable at 0° or 180°, achieving more delicate details.



### New Possibilities with 35° Milling, Opened by CRAFT.

The CRAFT series rotates the B-axis up to 35°, enabling precise results in deep undercuts and full-arch prosthetics without angle restrictions.

A high-performance servo motor and rigid monoblock frame guarantee vibration-free accuracy at any angle, allowing even large prosthetics to be milled precisely from thinner zirconia blocks.



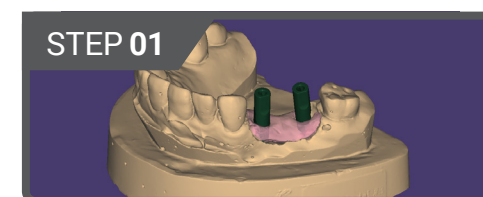
With 35° milling that reaches the very end of the screw hole, details previously difficult to achieve are now possible.



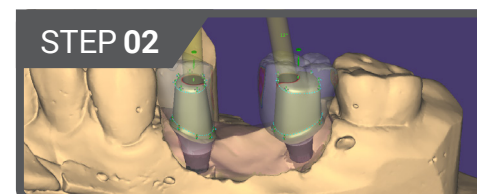


### The Era of One-Step Milling Begins with CRAFT

What everyone thought impossible — one-step milling — is now possible with the CRAFT series. CRAFT reproduces designs exactly as created, overcoming the mechanical limitations of conventional milling machines. Through 5-axis reverse milling, it manufactures abutments and superstructures simultaneously, realizing true One-Step milling.



STEP 01



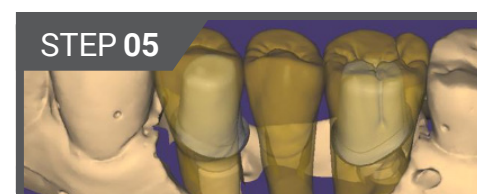
STEP 02



STEP 03



STEP 04

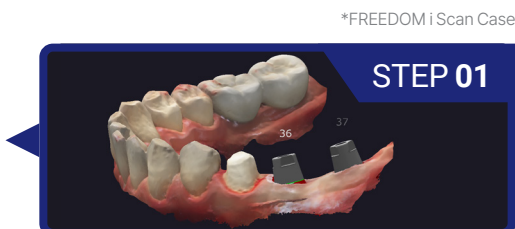


STEP 05

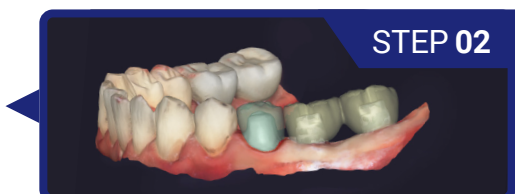


STEP 06

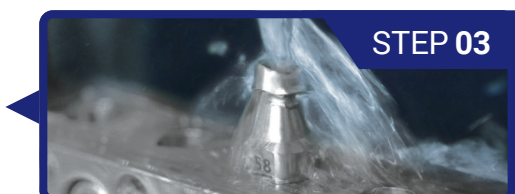
Conventional Method



STEP 01



STEP 02

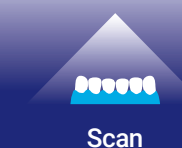


STEP 03



STEP 04

One-Step Milling



Scan

Crown & Custom  
Abutment Design

Abutment Milling



Abutment Scan



Crown Design



Crown Milling



Save time

Improved precision  
(Reduced spray error)

### A Completely New Way of Producing Abutments

Traditional methods for custom abutments involve designing, milling, and rescanning in multiple steps.

With one-step milling, both the custom abutment and the superstructure are manufactured simultaneously, drastically reducing the workflow. For example, while zirconia bridges are being sintered, abutments can be milled — saving over a full day of work. This also eliminates scanning errors, enhancing accuracy of the final result.



# MOTION<sub>APP</sub> × DOF SYNC

## Smart Connectivity Anytime, Anywhere

Monitor equipment status and milling progress in real time, wherever you are.

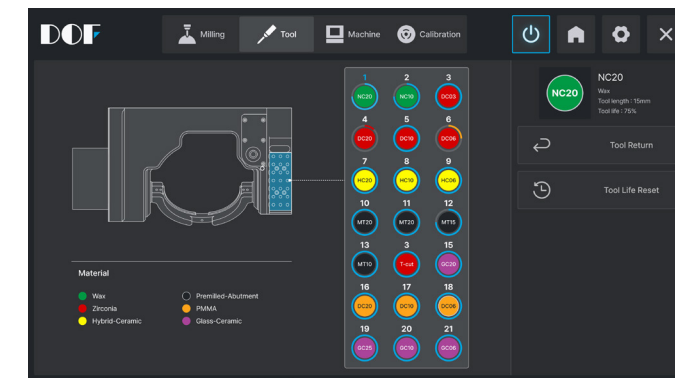
With the dedicated smartphone Motion App, you can control the machine remotely, while the PC-based DOF Sync App integrates schedule management, milling history, and system alerts in one platform.

Enjoy seamless, efficient workflows for faster productivity.



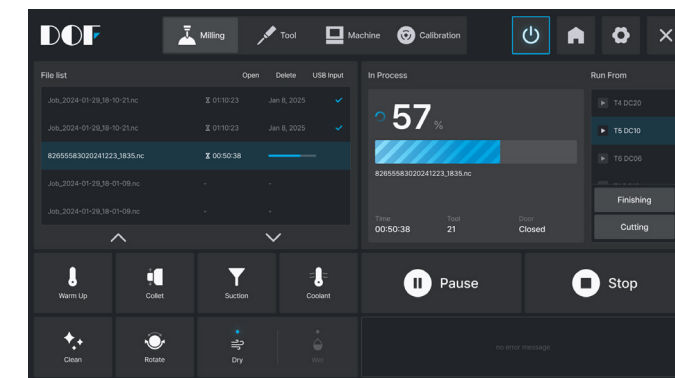
MotionApp 3.0 – More Than Just an Upgrade

## A unified workflow from start to finish



### Tool Life at a Glance

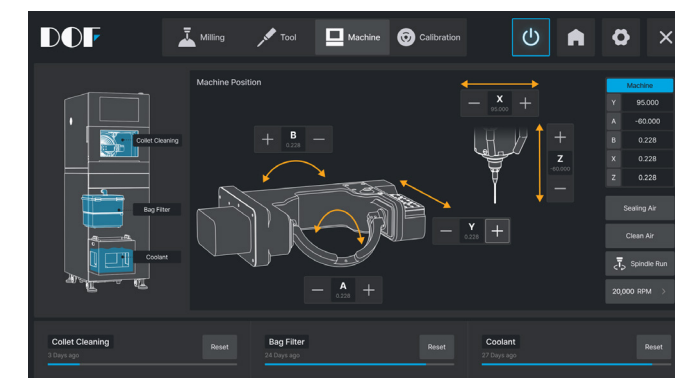
An intuitive UI displays the lifespan and position of each tool at a glance. Tools are organized for clarity and efficiency.



### Customized Control Optimized for Your Workflow

From tool selection to milling sequence and starting point — everything can be freely set according to your needs.

Interrupted tasks can be easily resumed, with real-time monitoring of progress and status.



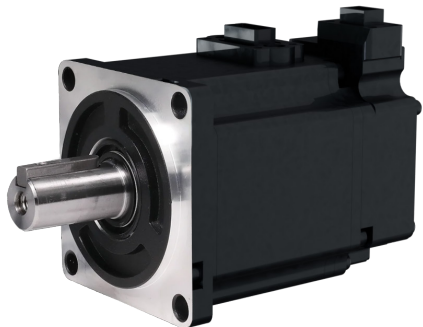
### Smart Control System for Everyone

From axis movement to start-point setup, everything is visualized for intuitive control. Real-time monitoring of machine status ensures efficient and reliable operation.

# All-in-One

All-in-One Integration!  
Dust collector, water pump, and compressor  
— all in one unit for unrestricted use anywhere.  
Easy operation and simplified maintenance.

- Dust Collector**  
Low- noise motor with 4-step suction control for a comfortable working environment.
- Coolant System**  
Water tank and pump enable processing of glass ceramics and titanium.
- Air Compressor**  
Stable operation without a separate compressor or air tank.



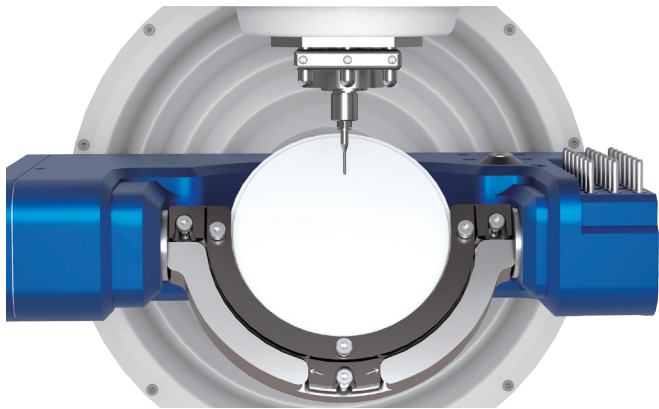
## 01 AC Servo Motor

High- speed, precise milling with real- time position correction and smooth motion even at high speeds.



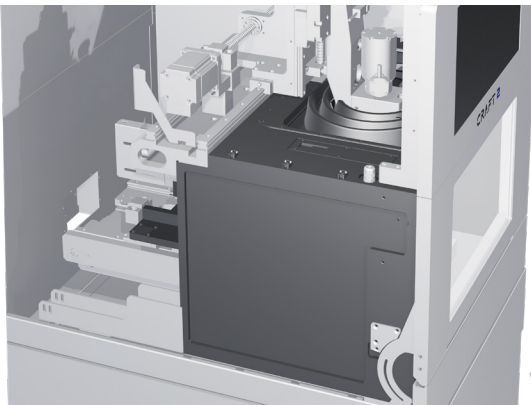
## 02 Wet & Dry Compatible Milling

Choose milling method based on material  
waterproofing prevents moisture infiltration,  
simplifying maintenance.



## 03 5-Axis Simultaneous Processing

A, B, X, Y, Z axes combined for unrestricted  
prosthetic design and excellent fit.



## 04 Sturdy & Low-Vibration

Compact, rigid frame minimizes vibration, ensuring  
durability and consistent results without frequent  
calibration.





## 05

### Larger Screen, Smarter Control

Built-in computer with intuitive milling software, easy for anyone to operate

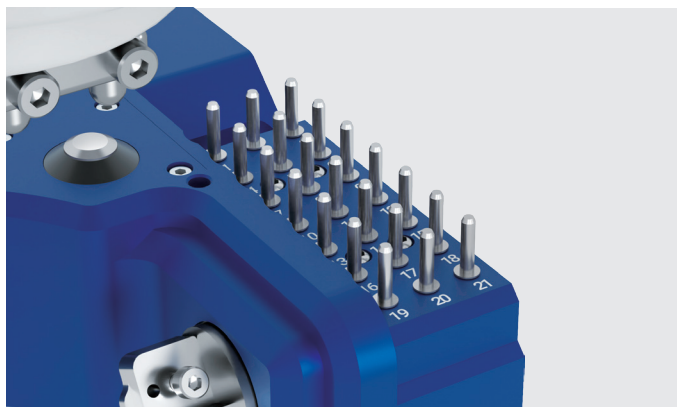


## 06

### High Quality Spindle

Stable milling of even hard materials.

\*CRAFT 2 → Jäger, 0.7kW, 100,000RPM  
CRAFT PLUS → SycoTec, 1.37kW, 60,000RPM



## 07

### 21 Station Automatic Tool Changer

Automatic switching between 21 tools, monitoring tool length, wear, and breakage for precision milling.



## 08

### Storage

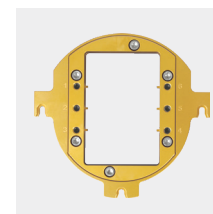
Integrated storage space for accessories, eliminating the need for external storage.

### Optional Jig



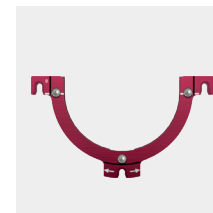
#### Premill Original Jig

Process up to 10 titanium pre-mills simultaneously.



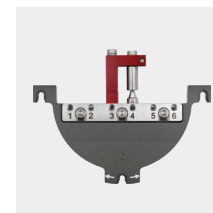
#### Glass Ceramic Jig

For processing materials like e.max\*  
\*e.max is registered trademark of Ivoclar Vivadent.



#### Hybrid Ceramic Jig (8T, 10T)

For hybrid ceramic discs.



#### Non-Hex Jig

5-axis processing of non-hex titanium pre-mills.



#### CRAFT PLUS Exclusive

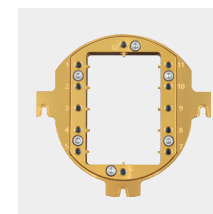
#### Metal C Type Jig

Specialized jig for stable titanium disk milling.



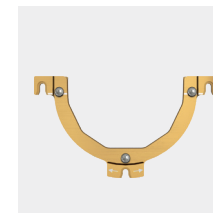
#### Premill Reverse Jig

For 5-axis titanium pre-mill processing.



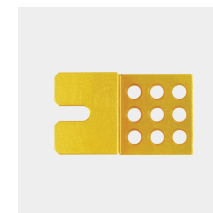
#### Hybrid Ceramic Jig

Simultaneous milling of up to 12 hybrid ceramic units



#### C-Hexa Type Jig (8T, 10T)

For HASS Rosetta SM discs.



#### Inlay Holder

Securely fixes small prosthetics like inlays with stone, enabling milling without connectors.

Materials & Indications

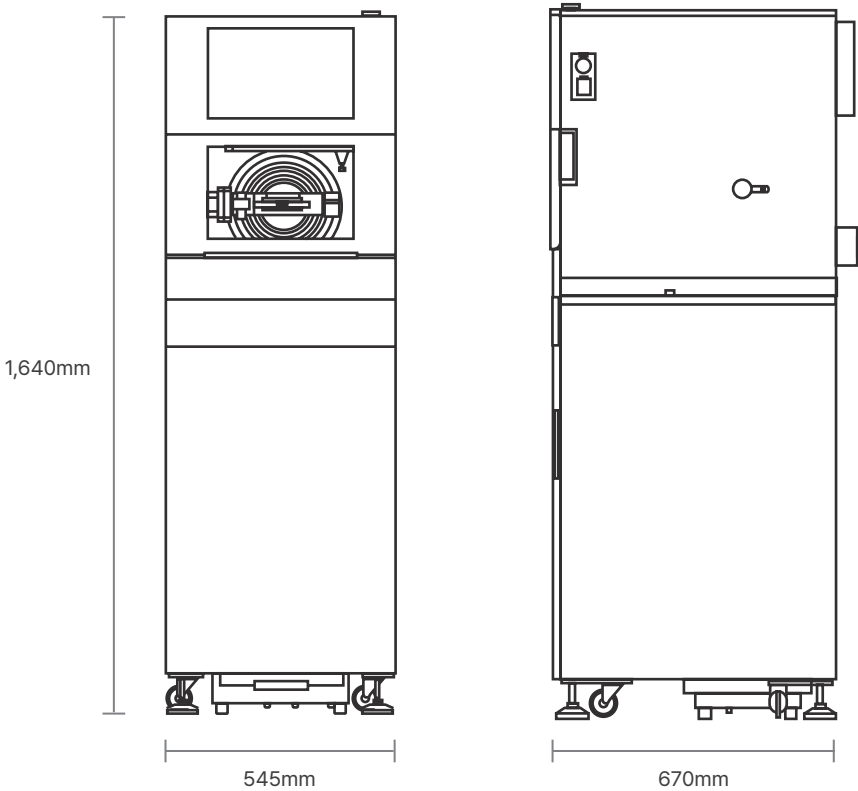
	Coping / Crown	Bridge	Inlay/Onlay	Veneer	Over Structure	Abutment
G/C, H/C	✓	✓	✓	✓		
Zir, PMMA, Wax	✓	✓	✓	✓	✓	
Pre-milled						✓
Ti Disk	PLUS	PLUS			PLUS	PLUS

CRAFT 2 Tool List

Zirconia / PMMA Ball End Mill	2.0 / 1.0 / 0.6 / 0.3	Hybrid Ceramic Ball End Mill	2.0 / 1.0 / 0.6
Zirconia Flat End Mill	0.6	Glass Ceramic Ball End Mill	2.5 / 2.0 / 1.0 / 0.6
Zirconia / PMMA Special Tool	T-cutter / Bull Nose 1.5	Titanium Ball End Mill	2.0 / 1.5 / 1.0
Wax Ball End Mill	2.0 / 1.0		

CRAFT PLUS Tool List

Metal Ball End Mill	3.0 / 2.0 / 1.5 / 1.0 / 0.6	Zirconia / PMMA Ball End Mill	2.0 / 1.0 / 0.6 / 0.3 / 2.0L / 1.0L
Metal Bull Nose Mill	1.5 Short / 1.5 Long	Zirconia / PMMA Special Tool	Bull Nose 1.5 T-cutter 2.0 / 1.8 / 1.6 / 1.4
Metal Flat End Mill	1.5 Short / 1.5 Long	Metal Reamer	2.4A90 / 2.3A180 / 2.6A180
Metal Drill	2.0 / 1.5 / 1.1	Metal Thread	M2.0*40 / M1.8*35 / M1.6*35 / M1.4*35
Glass Ceramics Grinding	2.5 / 2.0 / 1.0 / 0.6		



Specification

Product Name		CRAFT 2	CRAFT PLUS
Feature	Motor	AC Servo Motor	
	Spindle power	Max. 0.7kW / 100,000 RPM	Max. 1.37kW / 60,000RPM
	Number of tool ports	21ea	
	Network connection	Wired LAN + Wi-Fi (Mobile Motion App / DOF Sync)	
	Wet & dry milling	Dry & wet milling	
	Maximum tilt angle	A-axis ±360° / B-axis ±35°	
	Operating environment	15.6-inch display with Motion App 3.0	
	All-in-one	All-in-one milling machine including compressor, water pump, and dust collector	
Dimensions(W*D*H)		Machine 545 × 670 × 670mm Table 545 × 670 × 970mm	
Weight		Total 145kg	
CAM Software		hyperDENT, Millbox	
Power consumption		220V 16A	



## About DOF Inc.

DOF is a CAD/CAM total solution company that develops the world's leading 3D dental scanners and milling machines with proprietary technology. DOF Grows Together with Customers

Founded in 2012, DOF disrupted the industry with its moving-camera scanners and has grown rapidly ever since. With the world's only moving-camera model scanner FREEDOM X5, full-arch optimized intraoral scanner FREEDOM Air, all-in-one milling machine CRAFT 2, compact dry milling machine CRAFT DRY, high-end metal milling

machine CRAFT PRO, and all-in-one titanium-capable CRAFT PLUS, DOF has achieved the true meaning of a model-less total solution. DOF Grows Together with Customers At DOF, every product is designed from the customer's perspective — focusing on required functions and eliminating inconveniences.

Even after release, continuous feedback from users is applied to improve products. DOF's vision and future is to make dental professionals' work more convenient and enjoyable.



[doflab.com](https://doflab.com)